

AVAILABLE FOR
CHARTER



Mariu

49.90m (163'8"ft) | Codecasa | 2003

Mariu For Charter

Mariu is a 49.9m superyacht built in 2003 by Codecasa.

Weekly Charter Rates

Summer

From 185 000 €

Winter

From \$0

Details correct as of 26 Apr, 2024

FOR CHARTER

Cabins:	6
Guests:	12
Crew:	11
Beam:	9.50m (31'2"ft)
Draft:	3.10m (10'2"ft)
Speed:	-
Built/Refit:	2003 / 2020
View online at	http://www.superyachts.com/yacht-charter/mariu-4180/

MARIU

49.90m (163'8"ft) | 2003

DESCRIPTION

Designed by and built for iconic fashion designer Giorgio Armani, Mariu’s interior is the height of fashion. Textures and tones found in charter yacht Mariu’s interior include leather, richly grained woods and aluminium ceilings that have a soft reflective sheen, beautifully contrasting the rustic wide teak floorboards and bleached oak panelling. With open-plan saloons and minimalist staterooms, Mariu has six double cabins. The yacht is ideally set up for families and friends charters. An elevator connects all four decks, including a very large sun deck that can be flexibly shaded for sunbathing or an afternoon nap. The main deck office has recently been replaced with a 200-bottle wine cellar allowing guests to enjoy a large variety of refined wines. Armani’s ideas and vision have leapt from catwalk to cakewalk. Here is the chance to charter the lifestyle. Mariu is now an RYA training establishment for personal water craft. As such, a temporary license to drive jet skis and waverunners can be awarded to guests aboard Mariu, valid for the duration of their stay aboard. Guests between the age of 12 to 16 can also receive the certificate, but they need to be accompanied by a licensed adult aboard the jet ski.

ACCOMMODATION

Mariu accommodates 12 guests in 6 cabins. There are also 12 professional crew members who look forward to welcoming you on board.

COMMUNICATION

WiFi

AUDIO & VISUAL EQUIPMENT

Extensive audio-visual systems

TENDER & TOYS

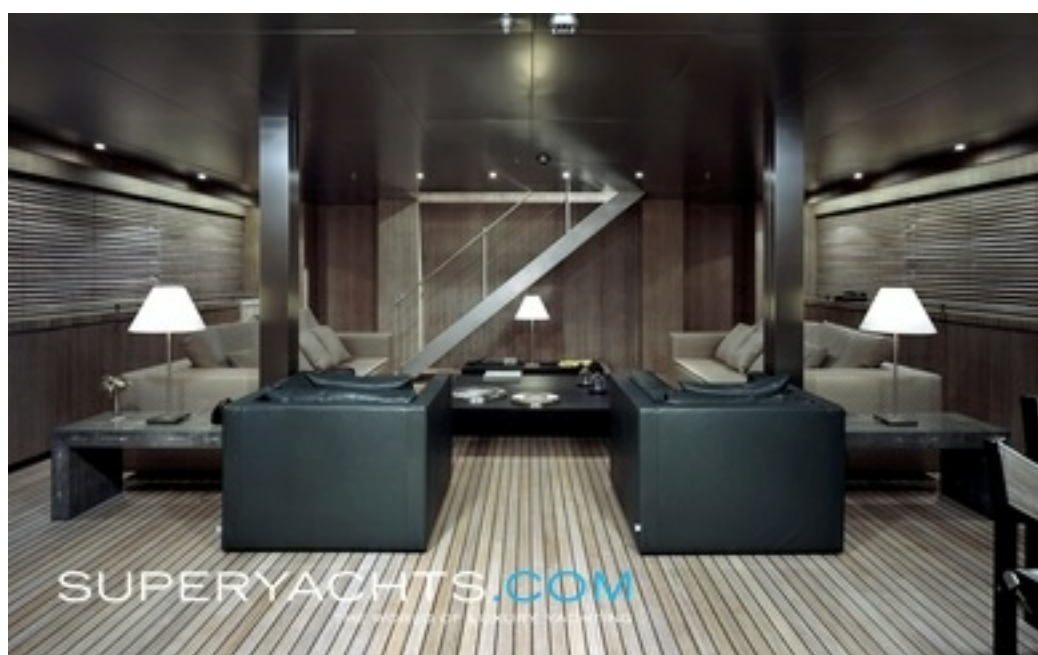
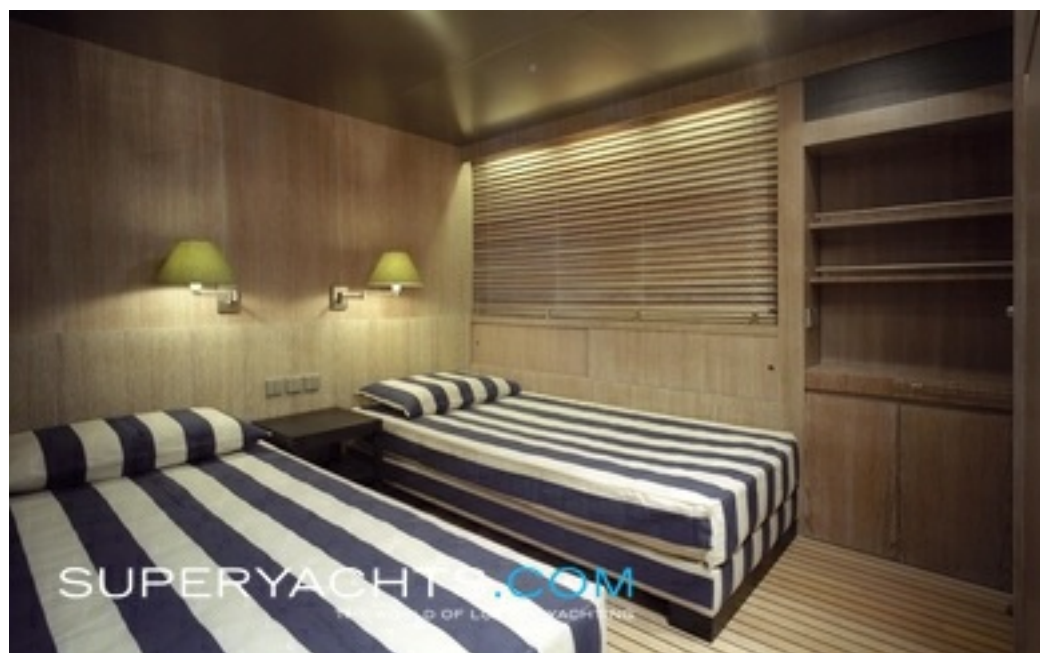
- RHIB 9.5m 2008 Novurania chase tender
- RHIB 4m Castoldi jet tender
- 1 x Kawasaki STX-15F
- 1 x Yamaha Wave runner 1800
- 1 x Seabob Cayago F7
- 2 x Fly board Legend
- 1 x Jet pack
- 1 x Kneeboard
- 1 x Bodyboard
- 3 x Wakeboard
- 1 x Wakesurf Liquid Force
- 2 x Kiteboard
- 2 x Kitesurfing Kite
- 3 x Waterskies
- 1 x Monoskies
- 1 x Windsurf board
- 2 x Windsurf sails (5m and 6m)
- 2 x RRD Paddleboards Air
- 2 x Starboard Paddleboard AST
- 1 x 2 person rigid kayak
- 2 x 1 person rigid kayak
- 1 x Towable Banana 6 pax
- 1 x Towable XO Extreme 3 pax
- 1 x Towable Airstream III 3 pax
- 1 x Towable Aqua glide Airport
- 2 x Towable Jobe children doughnuts
- 2 x Sets of Game fishing rods
- 12 x Sets of Snorkeling gear
- 6 x full sets of Diving equipment - dive instructor onboard as crew (RDV Diving only)
- 1 x Dive compressor- 2 x Mountain bikes

AMENITIES

- Zero speed stabilisers
- Jacuzzi
- Gym

MARIU

49.90m (163'8"ft) | 2003



FOR MORE INFORMATION VISIT [SUPERYACHTS.COM](https://www.superyachts.com)

MARIU

49.90m (163'8"ft) | 2003



FOR MORE INFORMATION VISIT [SUPERYACHTS.COM](https://www.superyachts.com)

SPECIFICATIONS

Overview

Name:	Mariu
Type:	Motor Yacht
Model:	Custom
Sub Type:	
Builder:	Codecasa
Naval Architect:	Codecasa
Exterior Designers:	Codecasa
Interior Designer:	Armani Casa Ortelli Architetti
Year:	2003
Flag:	-
MCA:	Yes
Class:	-
Hull NB:	F.65
Hull Colour:	-

Dimensions

Length Overall:	49.90m (163'8"ft)
Length at Waterline:	41.70m (136'9"ft)
Beam:	9.50m (31'2"ft)
Draft (min):	-
Draft (max):	3.10m (10'2"ft)
Gross Tonnage:	594 tonnes

Accommodations

Guests:	12
Cabins Total:	6
Cabins:	1 Master / 5 Double /
Crew:	11

Construction

Hull Configuration:	-
Hull Material:	Steel
Superstructure:	Aluminium
Deck Material:	-
Decks NB:	-

Engine(s)

Quantity:	2
Fuel Type:	Diesel
Manufacturer:	Caterpillar Inc
Model:	3516B
Power:	4520hp / 3371kW
Total Power:	9040hp / 6741kW
Propulsion:	Twin screw

Performance & Capabilities

Max Speed:	17.50 kts
Cruising Speed:	0.00 kts
Range:	-
Fuel Capacity:	120,000.00 L / 26,396.28 USG
Water Capacity:	19,000.00 L / 4,179.41 USG

Equipment

Generator:	-
Stabilizers:	-
Thrusters:	-
Amenities:	-