

AVAILABLE FOR
CHARTER



Grace

30.48m (100'0"ft) | Sanlorenzo | 2001

Charter M/Y Grace

Grace is a 30.48 metre motor yacht which was built and launched by the Italian shipyard Sanlorenzo in 2001.

Weekly Charter Rates

Summer

From 36 750 €

Details correct as of 26 Apr, 2024

Winter

From 36 750 €

FOR CHARTER

Cabins: 4
Guests: 10
Crew: 5
Beam: 6.70m (21'11"ft)
Draft: 1.90m (6'2"ft)
Speed: 23.00 kts
Built/Refit: 2001 / 2019

View online at

<http://www.superyachts.com/yacht-charter/grace-2918/>

PLEASE CALL TO ENQUIRE:

HK Tel: +852 81 237 983 
UK Tel: +44 20 8123 0667 
USA Tel: +1 239 243 9678 

FOR MORE INFORMATION VISIT [SUPERYACHTS.COM](http://www.superyachts.com)

GRACE

30.48m (100'0"ft) | 2001

DESCRIPTION

Grace most recently underwent a refit in 2019, bringing her up to modern standards.

ACCOMMODATION

Polar Star can sleep up to a maximum of ten guests in her four cabin layout which features a master cabin, VIP cabin and two guest cabins. She also accommodates for her crew in separate crew cabins ensuring a relaxed and luxurious charter experience.

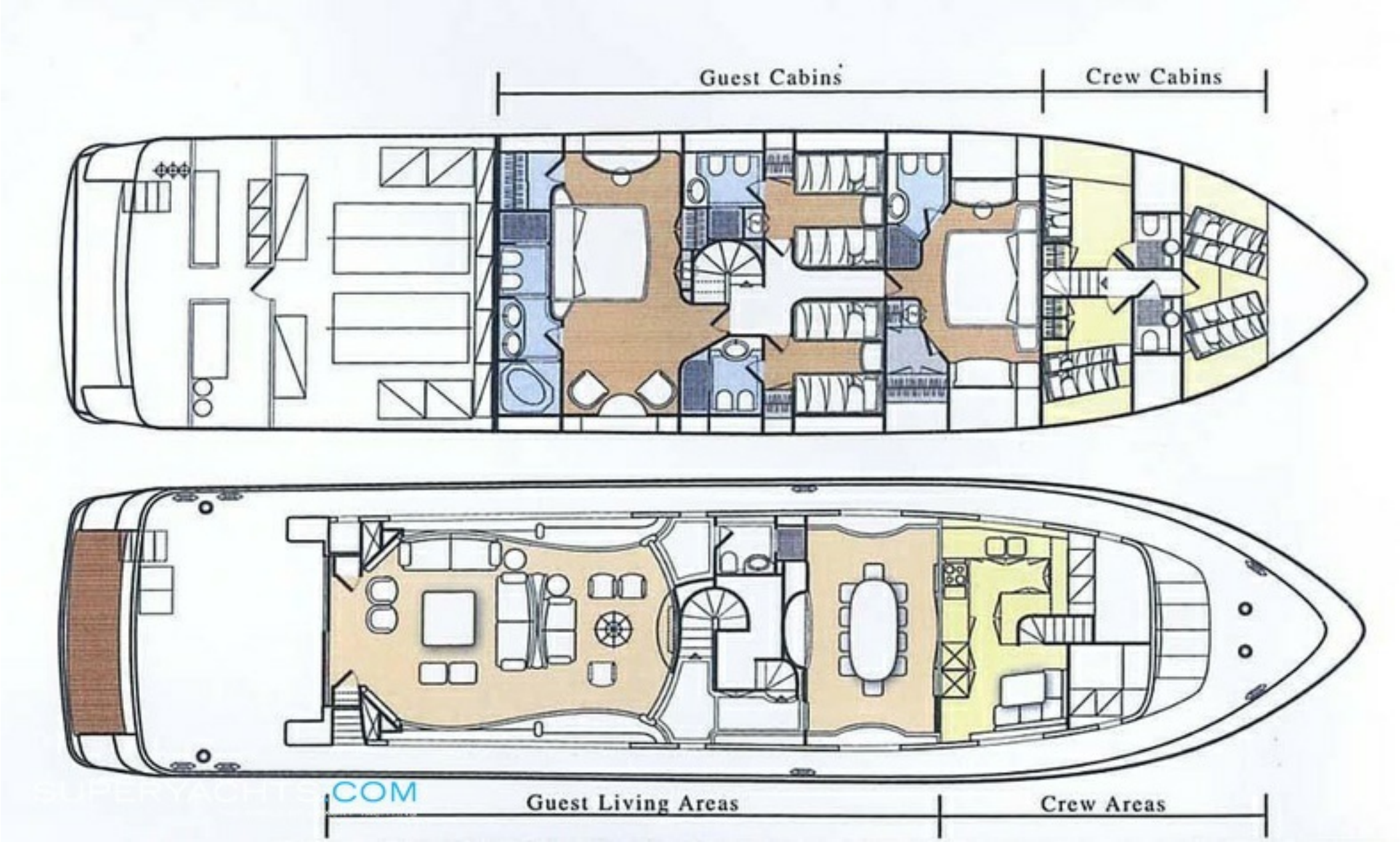
TENDER & TOYS

- Tender 5,10m. Platinum Line with 90 HP Yamaha Tender Outboard
- Waterski
- Jet Ski: Upon Request
- Fishing equipment
- Snorkelling

GRACE

30.48m (100'0"ft) | 2001

YACHT LAYOUT



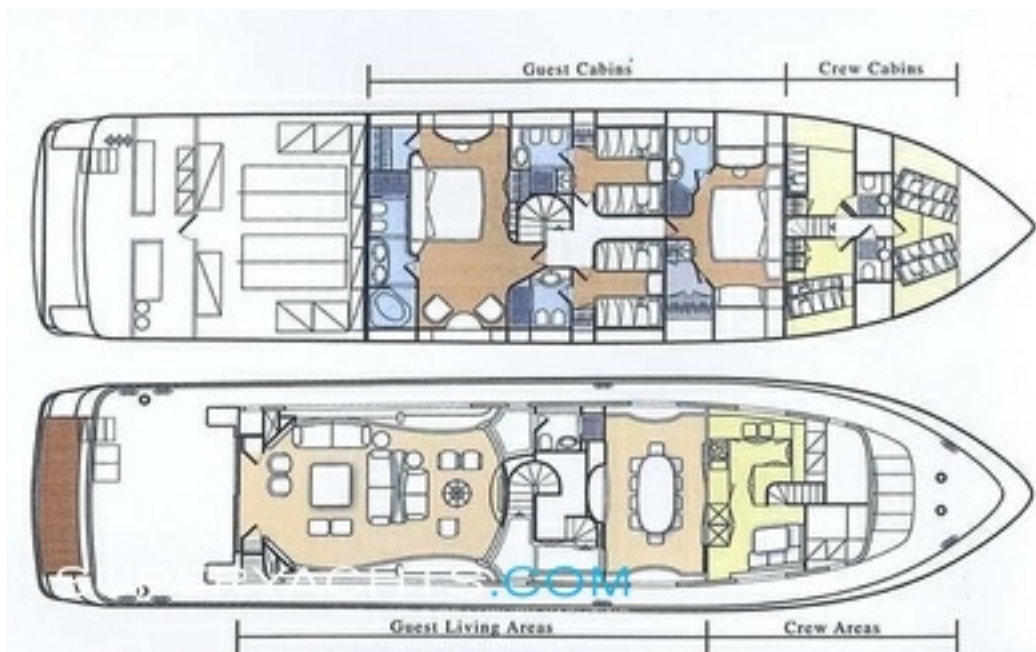
PLEASE CALL TO ENQUIRE:

HK Tel: +852 81 237 983 
UK Tel: +44 20 8123 0667 
USA Tel: +1 239 243 9678 

FOR MORE INFORMATION VISIT [SUPERYACHTS.COM](https://www.superyachts.com)

GRACE

30.48m (100'0"ft) | 2001



PLEASE CALL TO ENQUIRE:

HK Tel: +852 81 237 983 
UK Tel: +44 20 8123 0667 
USA Tel: +1 239 243 9678 

FOR MORE INFORMATION VISIT [SUPERYACHTS.COM](https://www.superyachts.com)

GRACE

30.48m (100'0"ft) | 2001



PLEASE CALL TO ENQUIRE:

HK Tel: +852 81 237 983 
UK Tel: +44 20 8123 0667 
USA Tel: +1 239 243 9678 

FOR MORE INFORMATION VISIT [SUPERYACHTS.COM](https://www.superyachts.com)

GRACE

30.48m (100'0"ft) | 2001



PLEASE CALL TO ENQUIRE:

HK Tel: +852 81 237 983 
UK Tel: +44 20 8123 0667 
USA Tel: +1 239 243 9678 

FOR MORE INFORMATION VISIT [SUPERYACHTS.COM](https://www.superyachts.com)

GRACE

30.48m (100'0"ft) | 2001



PLEASE CALL TO ENQUIRE:

HK Tel: +852 81 237 983 
UK Tel: +44 20 8123 0667 
USA Tel: +1 239 243 9678 

FOR MORE INFORMATION VISIT SUPERYACHTS.COM

GRACE

30.48m (100'0"ft) | 2001



PLEASE CALL TO ENQUIRE:

HK Tel: +852 81 237 983 
UK Tel: +44 20 8123 0667 
USA Tel: +1 239 243 9678 

FOR MORE INFORMATION VISIT [SUPERYACHTS.COM](https://www.superyachts.com)

GRACE

30.48m (100'0"ft) | 2001



GRACE

30.48m (100'0"ft) | 2001

SPECIFICATIONS

Overview

Name:	Grace
Type:	Motor Yacht
Model:	Sanlorenzo SL100
Sub Type:	
Builder:	Sanlorenzo
Naval Architect:	Sanlorenzo
Exterior Designers:	Sanlorenzo
Interior Designer:	Lisa Vanderpump
Year:	2001
Flag:	-
MCA:	
Class:	-
Hull NB:	-
Hull Colour:	-

Dimensions

Length Overall:	30.48m (100'0"ft)
Length at Waterline:	-
Beam:	6.70m (21'11"ft)
Draft (min):	-
Draft (max):	1.90m (6'2"ft)
Gross Tonnage:	-

Accommodations

Guests:	10
Cabins Total:	4
Cabins:	-
Crew:	5

Construction

Hull Configuration:	-
Hull Material:	-
Superstructure:	-
Deck Material:	-
Decks NB:	-

Engine(s)

Quantity:	2
Fuel Type:	-
Manufacturer:	MTU
Model:	-
Power:	2300hp / 1715kW
Total Power:	4600hp / 3430kW
Propulsion:	-

Performance & Capabilities

Max Speed:	28.00 kts
Cruising Speed:	23.00 kts
Range:	-
Fuel Capacity:	13,000.00 L / 2,859.60 USG
Water Capacity:	2,300.00 L / 505.93 USG

Equipment

Generator:	-
Stabilizers:	-
Thrusters:	-
Amenities:	-

PLEASE CALL TO ENQUIRE:

HK Tel: +852 81 237 983 
UK Tel: +44 20 8123 0667 
USA Tel: +1 239 243 9678 

FOR MORE INFORMATION VISIT [SUPERYACHTS.COM](https://www.superyachts.com)