



Princess Iluka

34.50m (113'2"ft) | Ray Kemp | 1979

Princess Iluka available for Charters

Words cannot describe the luxury and opulence passengers will enjoy aboard the Australian beauty, Princess Iluka. With sleek exterior styling and a lavish interior, this yacht will impress the most discerning of charter clients.

Weekly Charter Rates

Summer

From 65 000 €

Winter

From 65 000 €

Details correct as of 27 Apr, 2024

FOR CHARTER

Cabins:	5
Guests:	10
Crew:	6
Beam:	6.20m (20'4"ft)
Draft:	3.20m (10'5"ft)
Speed:	12.00 kts
Built/Refit:	1979 / 2009

View online at

<http://www.superyachts.com/yacht-charter/princess-iluka-2241/>



PRINCESS ILUKA

34.50m (113'2"ft) | 1979

DESCRIPTION

Carefully crafted around one vision and restored with passion over nine years, Princess Iluka is perfectly matched to those who want, expect and must have the best. Her hull is made from 750 year old Huon Pine timber felled in the Tasmanian forests more than 35 years ago. Rich Australian earthy colours are mixed with timbers and handcrafted furniture to assure you that no expense has been spared in this glorious ship’s restoration. Her heritage resonates throughout her interior to present a unique rich Australian flavour. Relax and admire the pristine view from the sun bridge; indulge in a romantic sunset dip in the Jacuzzi on the fore deck; enjoy six star service at the hand-crafted dining table or chill out with friends on the aft deck. No matter how you want to relax, entertain or play, Princess Iluka and her professional crew fulfil your every desire, right down to the last detail. It truly is a unique experience like no other. WALKTHROUGH Princess Iluka invites you to experience the best Australia has to offer from her many vantage points. From the sun deck, you will be able to relax and sunbathe on lounge chairs with a drink in hand. Join the Captain as he navigates to your destination and take in the view. Or if you wish to escape for some privacy, there are plenty of secluded outdoor areas. Down on the fore deck, you can relax in the Jacuzzi or just sit back and watch the world float by. The upper aft deck is a great place to enjoy casual meals. You can enjoy professionally cooked food in the formal dining setting or on the upper aft deck at the casual table setting, all whilst absorbing the stunning surroundings. The fully equipped galley with its state of the art appliances enables the chef to prepare culinary delights to tantalise your taste buds. The sky lounge area boasts a bar stocked with your favourite drinks, a 50 inch wide screen digital TV with satellite connection, more than 200 movies, and, a spacious lounge for you to relax on and enjoy panoramic views. Princess Iluka also has a saloon area for formal seating, reading, or conducting business.

ACCOMMODATION

The full width master suite has its own private spa, ensuite, lounge area, large windows to take in the sea views, and, a king size bed. Princess Iluka also offers accommodation for eight guests in a VIP stateroom, a double guest cabin, a twin cabin and a bunk bedded cabin for children, each with their own ensuite.

COMMUNICATION

WIFI

AUDIO & VISUAL EQUIPMENT

Extensive audio-visual systems
Satellite TV

TENDER & TOYS

4m custom made Nauma-tec Italian inboard jet with Ski pole and full spray dodger
2 x Honda R12 waverunners
2 x kayaks
Waterskis
Kneeboard
Ski biscuit
2 x Scuba gear
Dive compressor
Power dive unit
On board dive Master (Certified divers only)
Snorkelling equipment
Golf driving range (played from Sundeck)
Fishing tackle

AMENITIES

At Anchor Stabilisers
Jacuzzi



PRINCESS ILUKA

34.50m (113'2"ft) | 1979



PRINCESS ILUKA

34.50m (113'2"ft) | 1979



PRINCESS ILUKA

34.50m (113'2"ft) | 1979



PRINCESS ILUKA

34.50m (113'2"ft) | 1979

CREW



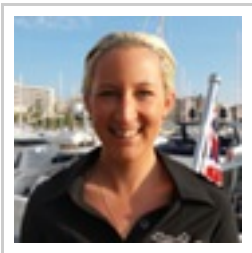
Ben Wark 
Engineer

Ben hails from a small surfing town in the north island of New Zealand called Raglan. After completing High School, he chose to pursue a career in engineering and moved to Auckland where he would spend the next 6 years training with Air New Zealand to become a qualified Aircraft...



Alisha King 
Mate/Deckhand

Alisha was born in a large North Queensland town called Townsville but moved to New Zealand with her parents at the age of 4 and lived in the coastal area known as the Coromandel. Alisha's love for surfing and all water sports saw her pursue a career within the Navy at the young age of 18. ...



Hannah Willan 
Chief Stewardess

Hannah was born in Christchurch, NZ. At the age of 19, like many young kiwi's, she packed up and crossed the ditch to Australia where not only did she cross an ocean, she knew she had to find away to work on it and get paid for it as well. Starting off as a Stewardess/Deckhand for an...



Belinda O'Brien 
Stewardess

'B' was born in Wellington, New Zealand, grew up in Auckland and has always been surrounded by the sea. Frequently holidaying in Taupo and the Coromandel, B's love for the water and boats quickly developed. B went on to study communications, advertising and marketing and worked for 5 years...



Matthew Baily 
Captain

Born in Sydney, Australia, Matt has spent the last 25 years in his back yard, Sydney Harbour and different Oceans around the world. Starting off as an avid sailor at the tender age of 6, Matt's love quickly shifted to motor yachts upon his first Captains role on board a 62' Sunseeker...

PRINCESS ILUKA

34.50m (113'2"ft) | 1979

SPECIFICATIONS

Overview

Name:	Princess Iluka
Type:	Motor Yacht
Model:	Custom
Sub Type:	
Builder:	Ray Kemp
Naval Architect:	Bernie Cohen Design
Exterior Designers:	
Interior Designer:	
Year:	1979
Flag:	Malta
MCA:	
Class:	-
Hull NB:	-
Hull Colour:	-

Dimensions

Length Overall:	34.50m (113'2"ft)
Length at Waterline:	-
Beam:	6.20m (20'4"ft)
Draft (min):	-
Draft (max):	3.20m (10'5"ft)
Gross Tonnage:	-

Accommodations

Guests:	10
Cabins Total:	5
Cabins:	1 Master / 2 Double / 2 Twin /
Crew:	6

Construction

Hull Configuration:	-
Hull Material:	Wood
Superstructure:	Wood
Deck Material:	-
Decks NB:	-

Engine(s)

Quantity:	2
Fuel Type:	-
Manufacturer:	Mercedes
Model:	-
Power:	- / -
Total Power:	- / -
Propulsion:	Twin Screw

Performance & Capabilities

Max Speed:	14.00 kts
Cruising Speed:	12.00 kts
Range:	2000.00 miles at 12 kts
Fuel Capacity:	16,000.00 L / 3,519.50 USG
Water Capacity:	-

Equipment

Generator:	
Stabilizers:	-
Thrusters:	-
Amenities:	-

